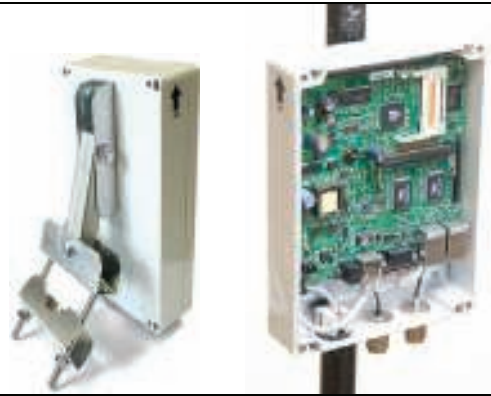


SP-COM(External)



Technical Specification And Feature

W-LAN Standard	802.11a/b/g Super G Mode
Radio Modulation Type	802.11b+g: DSSS, OFDM for data rate >30Mbps 802.11a: OFDM
Frequency Range	802.11b/g ~ 2.213-2.497 (5 MHz Step) 802.11a ~ 4.920 -6.100 (5MHz Step)
Operating Mode (Optional)	AP/AP-Client Mode/Point –to-Point /Repeater /WDS/Radio Authentication, Backhaul
Number of Channels	21 Channels (Supports 5 .10.20,40 MHz Channel Band)
R.F Output Power (Optional)	IEEE 802.11a: 24dBm / -90dBm @ 6Mbps 19dBm / -70dBm @ 54Mbps IEEE 802.11b: 25dBm / -92dBm @ 1Mbps 25dBm / -87dBm @ 11Mbps IEEE 802.11g: 25dBm / -90dBm @ 6Mbps 20dBm / -70dBm @ 54Mbps
Receiving Sensitivity /Output Power	IEEE 802.11a: 17dBm/-88dBm @ 6Mbps 13dBm/-71dBm @ 54Mbps IEEE 802.11b: 19dBm/-95dBm @ 1Mbps 19dBm/-90dBm @ 11Mbps IEEE 802.11g: 18dBm/-90dBm @ 6Mbps 15dBm/-73dBm @ 54Mbps
Chipset	Atheros AR5414
Security	Hardware 64 and 128 bit WEP; Hardware TKIP and AES-CCM encryption;(AES -512 Bit) 802.1x WPA authentication, Firewall, Routing
Transfer Data Rate	802.11b:11,5.5,2,1 Mbps, auto-fallback 802.11g(Normal mode):54,48,36,24,18,12,9,6 Mbps, auto-fallback 802.11g(Turbo mode):108,96,72,48,36,24,18,12 Mbps, auto-fallback 802.11a(Normal mode):54,48,36,24,18,12,9,6 Mbps, auto-fallback 802.11a(Turbo mode):108,96,72,48,36,24,18,12 Mbps, auto-fallback
Distance Support	Up to 25 Km With 24 Db Parabolic gird Antenna
Type Approval	FCC, CE and WECA Compliant
Media Access Protocol	CSMA/CA with ACK architecture 32-bit MAC
Management Control	Telnet/Win box/Web Based GUI
Supported OS	Router OS, Windows XP
Power	18V ,0.1 A ~24v,0.8A
POE	Supported
Connector	1 RJ-45 Port ,N-type connector for Antenna

	One N-type Connector for External Antenna
Environmental Specification	
Temperature Range (Degree C)	- 40 to + 70
Shock	QM333, Category D
Vibration	QM333, Category D
Water Protection	IP 67
Lightning Protection	Direct Ground
Environmental Protection	QM333, Category D
RoHS/WEEE Comply	Complied
Humidity	95% No Condensation

Ordering Information: SP-COM (External) (18V DC, POE and 50 Meter cat-5e Cable)

OTHER PRODCUTS Range: SP-COM (internal)

SP-COM (USB Dongle)

DESIGNED AND MARKETING IN INDIA BY S.P.IMPEX AND MARKETING CO.

ADDRESS: Harsh-Kaushal, Bldg no-3 B Wing, 401, Shivvallabh road, Ashokvan, Dahisar (East) Mumbai- 400068 Email:spimco@gmail.com Tel: 022-65164299,022-28977851 Mobile : 91-9323584823